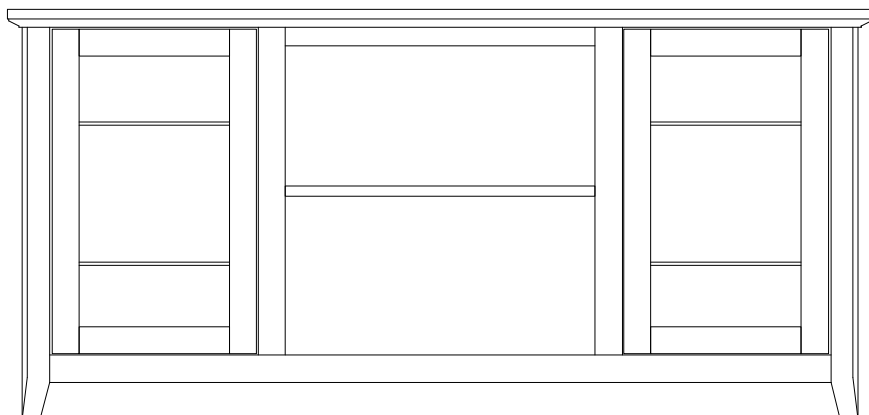


Brandon Credenza

Available Finishes:

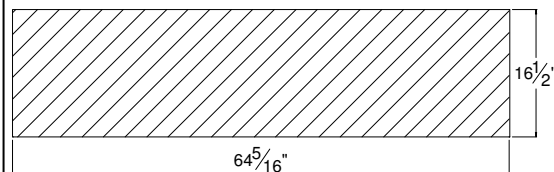
- # 412 47 **Cherry Mist Maple**
- # 412 27 **Autumn Maple**
- # 412 99 **Merlot Maple**
- # 412 39 **Chocolate Maple**
- # 412 51 **Mascara Maple**



Design Features:

- **Wood Species:** - Solid 4/4 maple used in mouldings and doors
- **Shelves:** - 4 adjustable/removable glass shelves
- 1 wood adjustable shelf
- **Joinery:** - Mitered mortise and tenon frames
- Recessed fitted back
- **Glass:** - 6mm thick polished glass shelves.
- 3mm thick glass door
- **Hardware:** - Satin nickel or antique brass knobs
- **Carton Weight:** - 125 lbs
- **Carton Volume:** - 25 cu. ft.
- **Height:** - 30-1/2" overall
- **Inner dimensions:**
 - Side storage: 17-3/4"w x 14-1/2"d x 24"h
 - Centre storage: 23-1/16"w x 15-1/4"d x 23"h

Footprint/Floorplan:



Glass Shelf Size:

